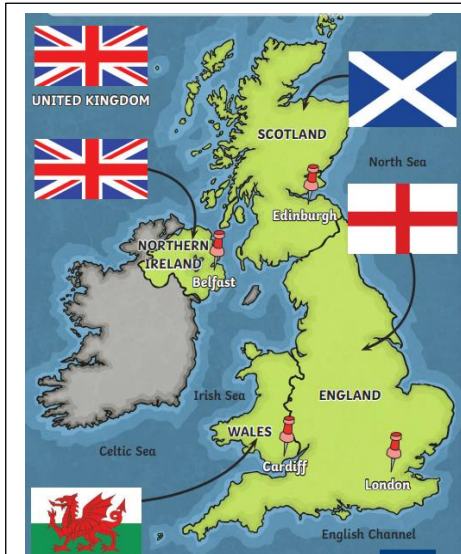
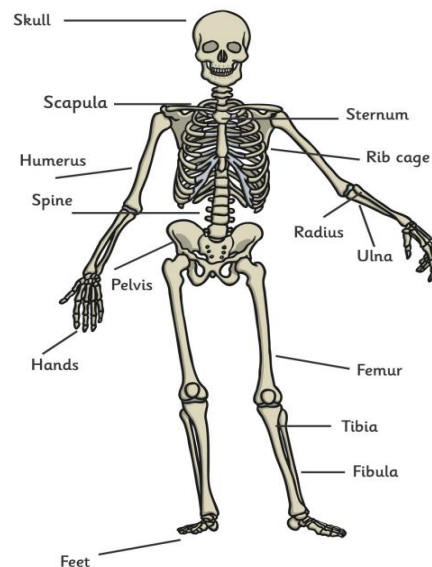


Key Vocabulary & Key Facts

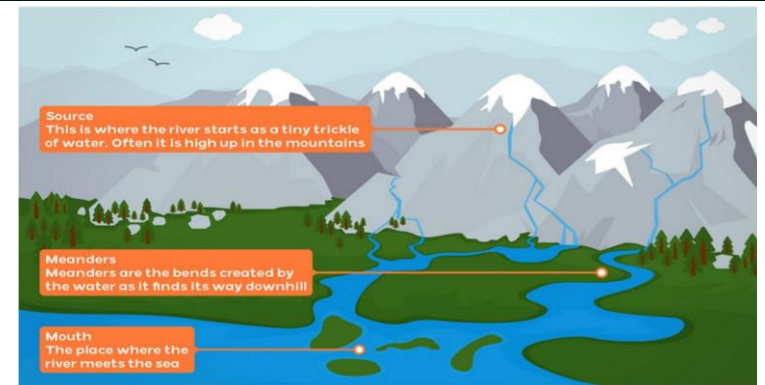
UK	The United Kingdom of Great Britain and Northern Ireland
Great Britain	England, Scotland and Wales
Continent	Group of countries
Europe	Continent containing the UK
county	A small area of the UK containing lots of cities, towns, villages and hamlets
physical geography	Natural features of geography. Eg. river, mountain or hill
human geography	Man-made features of geography Eg. churches, towns
topography	The study of shape and features on the surface of the Earth
population	Number of people living in that area
settlement	Settlements are places where people live and sometimes work. They can be small or large
development	How an area might change sometimes quickly, sometimes over a long period of time
nutrition	Nutrition is all about the nutrients in food, such as protein or vitamins, and how the body uses them
skeleton	Usually the bones of the body, which form a framework and protect the softer tissues
vertebrate	An animal with a backbone
invertebrate	An animal without a backbone
endoskeleton,	The skeleton is on the inside of the body
exoskeleton,	The skeleton is on the outside- often a hard layer covering the body or a shell
hydrostatic	Animals with hydrostatic skeletons have no bones at all. Instead their organs are contained within a fluid filled sack This skeleton structure provides no protection.
muscles	Muscle lies under the skin. It is made up of long threads, or fibres. It controls movement, posture and balance.



Key Fact-The adult human skeleton has 206 bones!

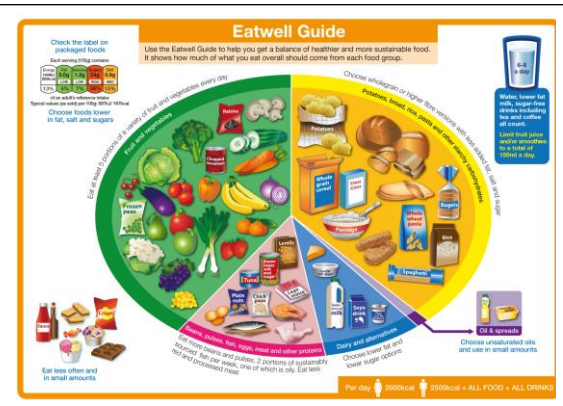


This is the journey of a river.
The river closest to where we live is called the River Thames.



Key Questions

- Where do we live?
- What are the physical features of our local area?
- What settlements and other land use is in our area?
- How do we get our nutrition?
- What bones do we have in our bodies?
- How do our muscles work?
- What differences are there between humans and other animals?



Key fact- Nutrition

The Eatwell plate helps us consider the best proportions of different groups of food.

